

# FLAIR STAIRS LTD



NEW STAIRCASES AND  
RENOVATIONS

Whether you are building a new house, renovating your home or would simply like to update your current staircase Flair Stairs are here to help.

With over 40 years of experience in the building industry Flair Stairs is a family run business. All of our skilled fitters work directly for Flair Stairs. We do not use sub-contractors to carry out any of our work.

Based in Hemel Hempstead in Hertfordshire we cover a large area including London and the Home Counties and beyond.

We have a wide range of styles of staircases and stair parts from Traditional to Contemporary and a wide choice of timbers which means that we can tailor our staircases to meet your requirements and your budget.

We carry out a free home visit where our Surveyor will discuss with you the various options and styles available and take the necessary details and measurements. You will then receive our free no obligation quotation from one of our Designers within a few days.

Our Designers will also check that the staircase complies with current Building regulations and if necessary our Surveyor will discuss in detail what would need to be done to ensure that the work carried out is fully compliant.

All of our staircases and stair parts can be supplied finished painted or lacquered from our own spray shop in a variety of finishes and colours which means that once the staircases and parts have been installed there is no need for decoration afterwards.

Our **5 Year Guarantee** on all parts and workmanship means that you can relax in the knowledge that the work carried out will be of the highest standard.

For your free no obligation quotation or to discuss your requirements with our friendly team call us now on  
**01442 300977**



Oak



Sapele



Ash



Walnut



Pine



White Primed



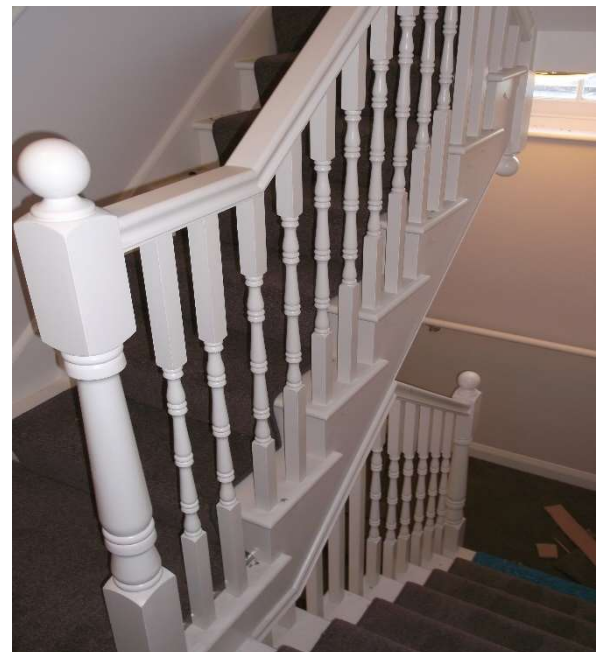
Southern Yellow Pine

There is a wide choice of different types of wood and finishes available and above are just a few of the more traditional ones used in the manufacture of timber staircases.

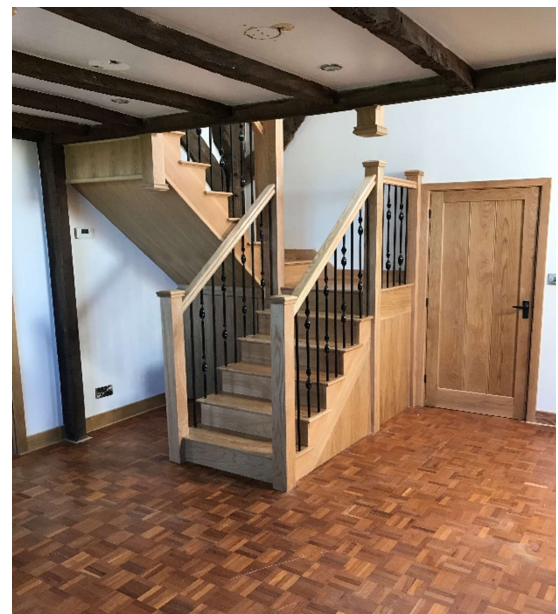
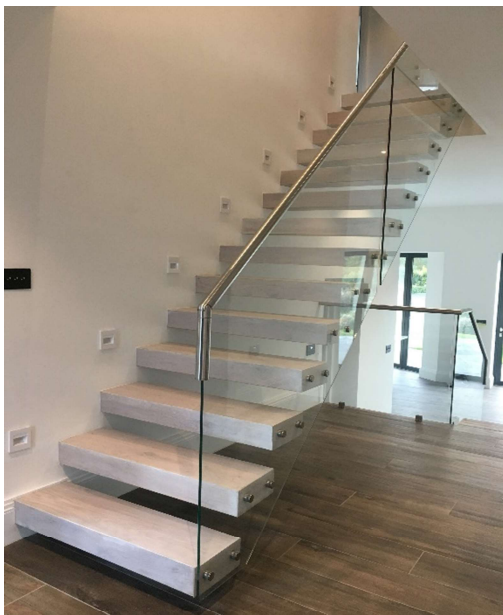
Of course you can always mix and match different woods and finishes as in this stunning Walnut and white cut string staircase where the contrast between the dark wood grain of the Walnut stands out beautifully against the White painted finish of the posts and spindles which are topped off with Walnut handrails and newel caps .



Or you may prefer to take a more traditional approach with turned newel posts and spindles. Another example of a cut string staircase this time using traditional spindles combined with Georgian newel posts with ball caps on top all in a White painted finish including the treads and risers to allow for a carpet runner to be fitted









These cut string staircases show a variety of different ways in which the choice of wood colour and type of newel posts and spindles can dramatically change the way a staircase looks, giving your staircase a unique look all of its own.

You can choose between having the entire staircase in a painted finish and using the detailed box newel posts to showcase the traditional style or you can have a combination of painted finish with wooden treads, handrails and newel caps. Of course you then have the choice of which timber you would like to contrast against the painted finish to suit your particular taste and style.

There is a wide choice of timbers which can be used, from the warm look of Oak to the dark contrasting look between walnut and white painted finish or you might prefer the traditional Mahogany look. Either way the mix and match style of these staircases gives you numerous choices.



Again there are lots of different choices of newel post and spindles to choose from which can also be mixed with each other from a traditional turned newel post with turned spindles to a more contemporary square post with square spindles and everything in between. The choice is yours.



These Georgian style newel posts and spindles have a classic look which has stood the test of time.

This traditional style with Oak posts and spindles and with oak stringers combined with a carpeted finish with a bullnosed bottom step would not look out of place in any home.



Of course once again this can be a combination which in this case is white Georgian spindles with white newel posts and with Oak handrails, this time with classic voluted handrails at the bottom set on a D-end step and curtailed bottom step.



This staircase is also using a combination of the Oak treads and white risers to compliment the overall style of the stairs.

The choice of bottom feature steps can vary depending on the configuration of the staircase.

The choices range from no feature step with a newel post right at the bottom of the stairs to a quarter landing. Other choices include D-end steps, bullnosed steps and curtailed steps.

There are many different types of feature steps which can be used to enhance your staircase.

This usually depends on the configuration of the staircase as well as the room available in the area around the bottom of the stairs as well as the particular style of the staircase.



These range from simple bullnosed steps and D-end steps through to Quarter landing steps and large wrap around steps and can be adapted to suit the surrounding area.



Of course all of the different styles of feature steps also come in a wide variety of timbers to match the staircase. From softwood treads ready to take carpet to Walnut or Oak treads with White risers feature steps can completely change the overall look and feel to your stairs.



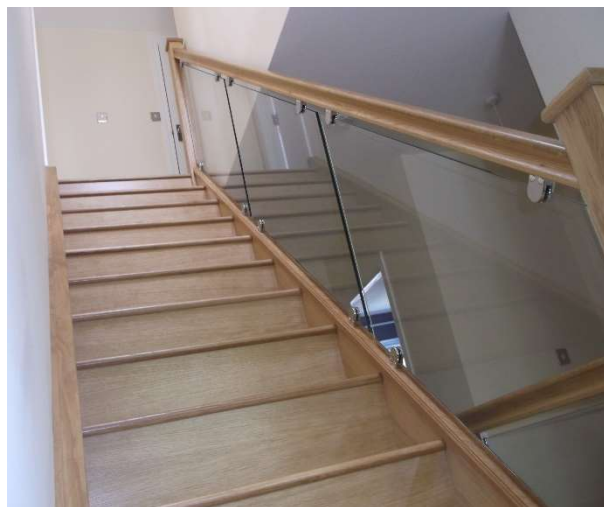
Oak and glass staircases are a very popular choice combining the warm look of the Oak with the light and airy feel of the glass which can be set into grooves in the handrails and base rails or fixed on Stainless Steel brackets.



The combination of Open riser staircase with glass balustrading gives any house a feeling of openness and light allowing light to pass through the open risers as well as the glass.

Closed riser Oak staircases look fantastic when combined with the glass balustrading and they also allow loads of light to shine through whilst showing the beauty of the Oak

The glass itself is always toughened safety glass with polished edges all round and where extra safety is required then the glass can be Laminated to different thicknesses.





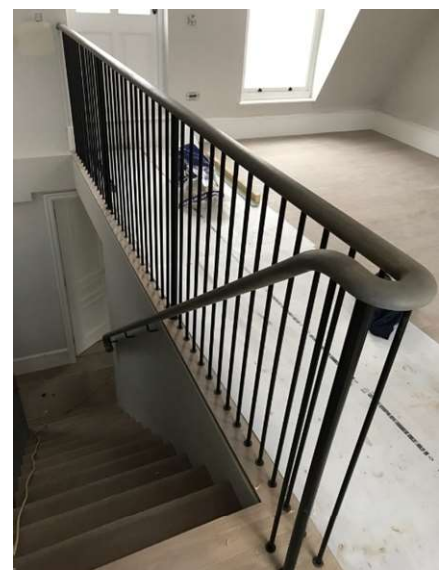
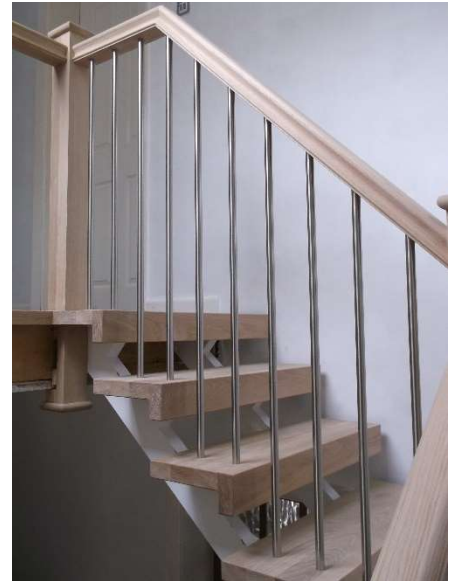
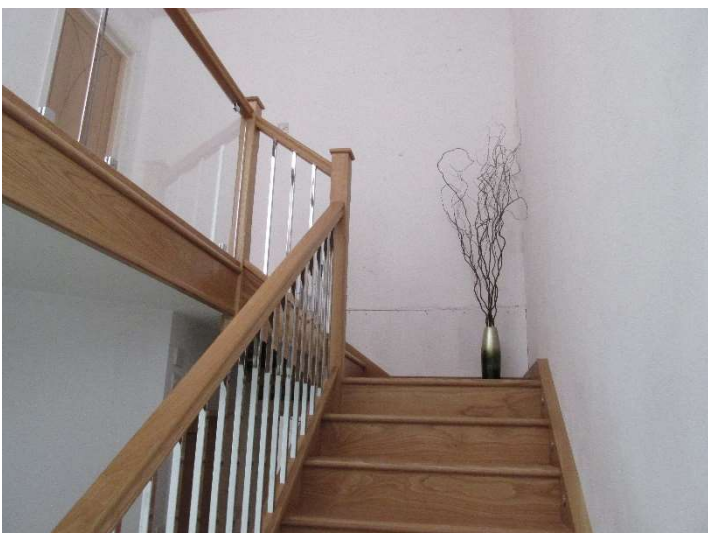
We have a wide selection of metal spindles available including Traditional Wrought iron spindles with various twists and designs.

Square and round spindles are available in a Stainless Steel finish as well as a polished Chrome finish.

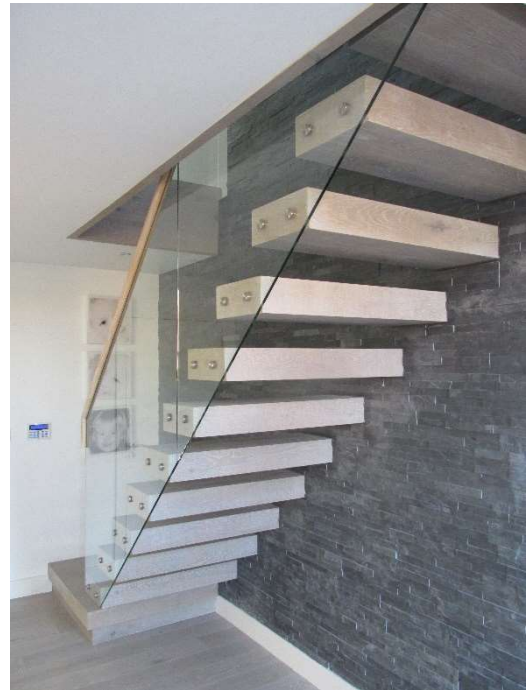
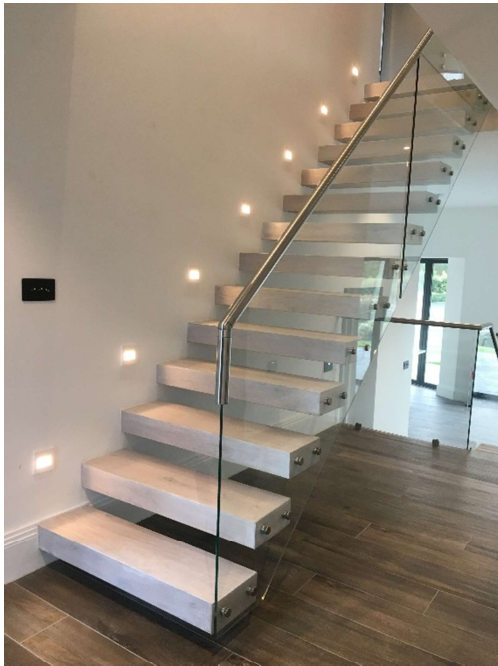


Round black spindles can be used to great effect in combination with the Oak staircase to give a very Contemporary look to the stairs.

These square Chrome spindles have been used in conjunction with Toughened safety glass which shows that a mixture of materials and finishes can look really smart



Cantilevered or “Floating” staircases create an ultra modern look with clean lines and with chunky treads which can be matched to any wood flooring finish and colour. These staircases are supported by a hidden steel framework which is attached to the main wall.



Curved staircases with Wreathed and curved handrails really do create an elegant and classic look of sheer class.

These can be manufactured in a huge variety of different ways by using different materials and finishes to create your perfect style.





At Flair Stairs we also specialize in staircase refurbishments, bringing old and outdated staircases which are past their best up to date with a fresh makeover. This can mean anything from repairing a few squeaky treads to giving the stairs a complete overhaul.

There is no limit to the designs of the refurbishments so any look can be created without the mess and without the need for major making good around the stairs. You can take the refurbishment to different levels from leaving in the old posts and just replacing the handrails and newel caps right through to completely cladding the whole staircase.



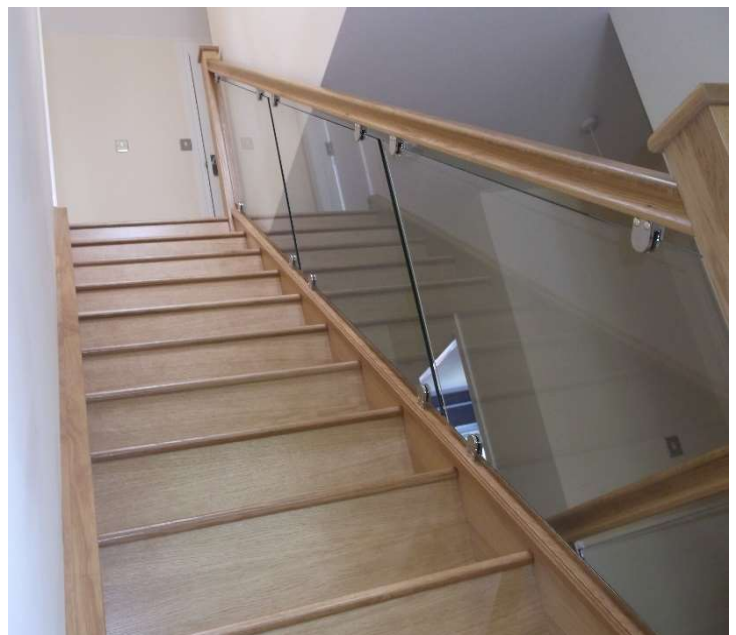
From this



To this



From this



To this



